

COPYRIGHT © Hangzhou EZVIZ Software Co., Ltd. ALL RIGHTS RESERVED.

Any and all information, including, among others, wordings, pictures, graphs are the properties of Hangzhou EZVIZ Software Co., Ltd. (hereinafter referred to as "EZVIZ"). This user manual (hereinafter referred to as "the Manual") cannot be reproduced, changed, translated, or distributed, partially or wholly, by any means, without the prior written permission of EZVIZ. Unless otherwise stipulated, EZVIZ does not make any warranties, guarantees or representations, express or implied, regarding to the Manual.


About this Manual

The Manual includes instructions for using and managing the product. Pictures, charts, images and all other information hereinafter are for description and explanation only. The information contained in the Manual is subject to change, without notice, due to firmware updates or other reasons. Please find the latest version in the EZVIZ™ website (<http://www.ezviz.com>).

Revision Record

New release – January, 2022

Trademarks Acknowledgement

EZVIZ™, ™, and other EZVIZ's trademarks and logos are the properties of EZVIZ in various jurisdictions. Other trademarks and logos mentioned below are the properties of their respective owners.

Legal Disclaimer

TO THE MAXIMUM EXTENT PERMITTED BY APPLICABLE LAW, THE PRODUCT DESCRIBED, WITH ITS HARDWARE, SOFTWARE AND FIRMWARE, IS PROVIDED "AS IS", WITH ALL FAULTS AND ERRORS, AND EZVIZ MAKES NO WARRANTIES, EXPRESS OR IMPLIED, INCLUDING WITHOUT LIMITATION, MERCHANTABILITY, SATISFACTORY QUALITY, FITNESS FOR A PARTICULAR PURPOSE, AND NON-INFRINGEMENT OF THIRD PARTY. IN NO EVENT WILL EZVIZ, ITS DIRECTORS, OFFICERS, EMPLOYEES, OR AGENTS BE LIABLE TO YOU FOR ANY SPECIAL, CONSEQUENTIAL, INCIDENTAL, OR INDIRECT DAMAGES, INCLUDING, AMONG OTHERS, DAMAGES FOR LOSS OF BUSINESS PROFITS, BUSINESS INTERRUPTION, OR LOSS OF DATA OR DOCUMENTATION, IN CONNECTION WITH THE USE OF THIS PRODUCT, EVEN IF EZVIZ HAS BEEN ADVISED OF THE POSSIBILITY OF SUCH DAMAGES.

TO THE MAXIMUM EXTENT PERMITTED BY APPLICABLE LAW, IN NO EVENT SHALL EZVIZ'S TOTAL LIABILITY FOR ALL DAMAGES EXCEED THE ORIGINAL PURCHASE PRICE OF THE PRODUCT.

EZVIZ DOES NOT UNDERTAKE ANY LIABILITY FOR PERSONAL INJURY OR PROPERTY DAMAGE AS THE RESULT OF PRODUCT INTERRUPTION OR SERVICE TERMINATION CAUSED BY: A) IMPROPER INSTALLATION OR USAGE OTHER THAN AS REQUESTED; B) THE PROTECTION OF NATIONAL OR PUBLIC INTERESTS; C) FORCE MAJEURE; D) YOURSELF OR THE THIRD PARTY, INCLUDING WITHOUT LIMITATION, USING ANY THIRD PARTY'S PRODUCTS, SOFTWARE, APPLICATIONS, AND AMONG OTHERS.

REGARDING TO THE PRODUCT WITH INTERNET ACCESS, THE USE OF PRODUCT SHALL BE WHOLLY AT YOUR OWN RISKS. EZVIZ SHALL NOT TAKE ANY RESPONSIBILITIES FOR ABNORMAL OPERATION, PRIVACY LEAKAGE OR OTHER DAMAGES RESULTING FROM CYBER ATTACK, HACKER ATTACK, VIRUS INSPECTION, OR OTHER INTERNET SECURITY RISKS; HOWEVER, EZVIZ WILL PROVIDE TIMELY TECHNICAL SUPPORT IF REQUIRED. SURVEILLANCE LAWS AND DATA PROTECTION LAWS VARY BY JURISDICTION. PLEASE CHECK ALL RELEVANT LAWS IN YOUR JURISDICTION BEFORE USING THIS PRODUCT IN ORDER TO ENSURE THAT YOUR USE CONFORMS TO THE APPLICABLE LAW. EZVIZ SHALL NOT BE LIABLE IN THE EVENT THAT THIS PRODUCT IS USED WITH ILLEGITIMATE PURPOSES.

IN THE EVENT OF ANY CONFLICTS BETWEEN THE ABOVE AND THE APPLICABLE LAW, THE LATTER PREVAILS.

Table of Contents

Overview	1
1. Package Contents	1
2. Basics	1
Setup	2
1. Get the EZVIZ App	2
2. Power on Water Sensor	2
3. Add Water Sensor	3
Installation	5
Operations on the EZVIZ App	6
1. Homepage	6
2. Settings	6

Overview

1. Package Contents



Water Sensor (x1)



Regulatory Information (x1)



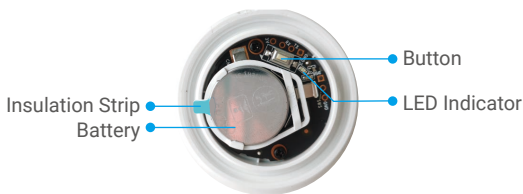
Quick Start Guide (x1)

2. Basics

After the water sensor is placed on the designated area, the water sensor will be triggered when the water level reaches above 0.5 mm. At the same time, the linked EZVIZ gateway will send a sound-light alarm and the EZVIZ APP will also receive the alarm notification. You can check the waterlogging status of the device on EZVIZ APP.



Back View



Interior Diagram

Name	Description
Button	Press and hold the Button for 5s, the water sensor will restart and then enter device adding mode.
LED Indicator	<ul style="list-style-type: none">• Fast-flashing Blue: Enters device adding mode.• Fast-flashing Blue and then off: Added to the Gateway successfully or failed.• Fast-flashing Blue and then off after 180 seconds: No response for adding device, the system exits automatically.• Blue for 1s and then off: Device starts or press the Button for 1 time.

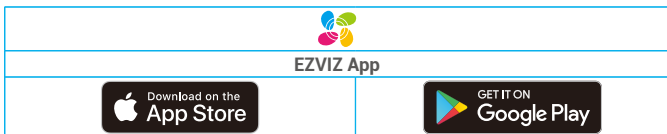
Setup

Follow the steps to set your detector.

1. Get the EZVIZ app, and log in to your EZVIZ app account.
2. Power on your water sensor.
3. Add your water sensor to your EZVIZ account.

1. Get the EZVIZ App

1. Connect your mobile phone to Wi-Fi (suggested).
2. Download and install the EZVIZ app by searching for "EZVIZ" in the App Store or Google PlayTM.
3. Launch the app and register an EZVIZ user account.

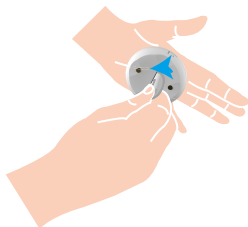


- i** If you have already used the app, please make sure that it is the latest version. To find out if an update is available, go to the app store and search for "EZVIZ".

2. Power on Water Sensor

Step 1 Remove Rear Cover

Remove the rear cover of the water sensor by rotating it anticlockwise with sheet tools (like coin with less than 2mm thickness) as shown in the figure below.



- i** • It is recommended to press the sheet tool into the groove and then rotate it, or you can put the water sensor in your hands to press and twist it by your palm.

Step 2 Remove Insulation Strip

Remove the battery insulation strip as shown in the figure below.



- i** • If you need to replace the battery, please purchase one CR2032 210mAh.
• When replacing batteries, please insert with the positive side facing up.
• Keep your hands dry and clean when touching the circuit board.

3. Add Water Sensor

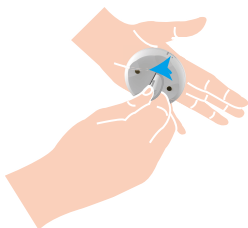
- i** The water sensor should be used along with EZVIZ Zigbee Smart Gateway (afterinafter referred to as "gateway"). Please add gateway to the EZVIZ Cloud by referring to the gateway user manual, and then add the water sensor to the gateway.

Method One: Add by Scanning QR Code

1. Log in to your account through EZVIZ app, tap the device adding icon and then the QR code scanning interface will be displayed.



2. Remove the rear cover of the water sensor by rotating it anticlockwise with sheet tools (like coin with less than 2mm thickness) as shown in the figure below. It is recommended to press the sheet tool into the groove and then rotate it, or you can put the water sensor in your hands to press and twist it by your palm.

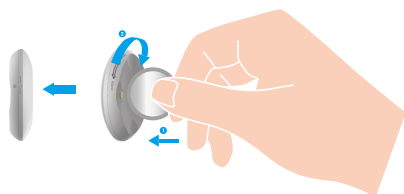


3. Scan the QR code on the inner side of the cover or on the user manual, and then add the water sensor to the gateway.



4. Add the water sensor to the gateway by following the wizard on the app.
5. Rotate tightly the rear cover of the water sensor clockwise till the aligning mark ► on rear cover is aligned with the mark | on the front cover.

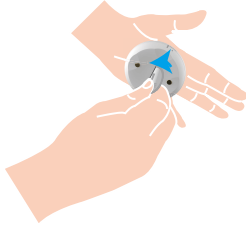
- i** When rotate the rear cover of the water sensor, press the coin into the groove and then rotate it.



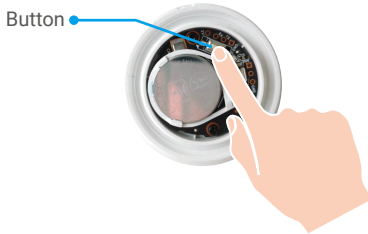
Method Two: Add by the Gateway

i When adding water sensor by the gateway, place the water sensor as close to the gateway as possible.

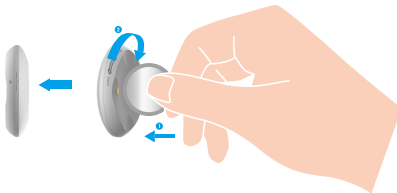
1. Make the gateway enter device adding mode as instructed by the user manual of the gateway.
2. Remove the rear cover of the water sensor by rotating it anticlockwise with sheet tools (like coin with less than 2mm thickness) as shown in the figure below. It is recommended to press the sheet tool into the groove and then rotate it, or you can put the water sensor in your hands to press and twist it by your palm.



3. Press and hold the water sensor Button for 5 seconds, and then the water sensor enters device adding mode.



4. When the water sensor indicator flashes blue quickly and then off, the water sensor has been added to the gateway successfully.
5. After the water sensor is added successfully, Rotate the sensor rear cover clockwise to tighten the rear cover till the aligning mark ► on rear cover is aligned with the mark ◯ on the front cover.



Installation

The water sensor can be put on the any plane surfaces of restroom, veranda, kitchen, warehouse and etc..

- Please install the water sensor on areas prone to water leakage.
- Do not install the water sensor on places where water has already flooded.
- Do not install the water sensor on places with people comes and goes to avoid losing.
- Do not install the water sensor in an environment with corrosivity or intense magnetic fields.
- To avoid accidental ingestions or other risks, keep the water sensor away from babies and children when in use.
- It is recommended that the distance between the water sensor and gateway be less than 20m. If there are walls between them, the number of walls should be no more than 2.
- If you have a house with large area, please purchase two or more EZVIZ devices for a better use effect.



Operations on the EZVIZ App

i The app interface may be different due to version update, and the interface of the app you installed on your phone shall prevail.

1. Homepage

Launch the EZVIZ app, open the homepage of the related gateway, you can manage your water sensor as needed on the page.

Log	Detection log of the sensor.
-----	------------------------------

2. Settings

Parameter	Description
Device Name	Customize the name of your device.
Emergency Button	When enabled, the device will switch to emergency call mode and the original arm and disarm button will be disabled.
Related Devices	You can see the gateway connected to your sensor.
Device Information	You can see the device information here.
Share	Share your device.
Delete Device	Tap to delete the sensor from EZVIZ cloud.